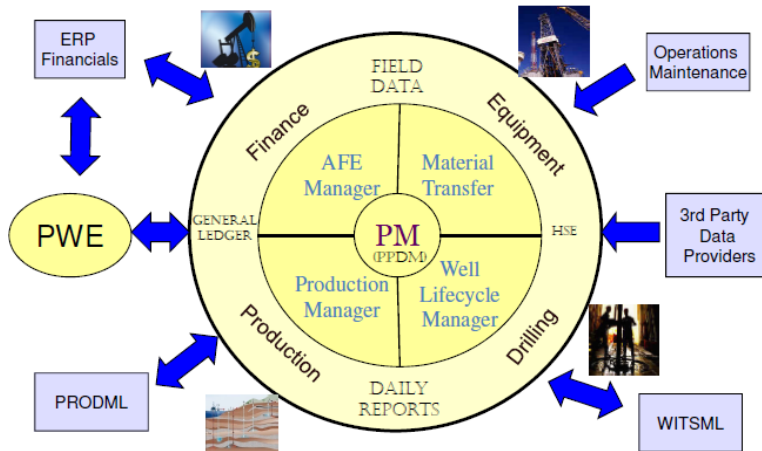


## Optimized Workflows for Operations



Operations Management Suite™ (OMS) is an integrated, enterprise solution for optimizing operational workflows. Its foundation is a data management layer, based on PPDM, that links task-specific centers and user work processes together. Based on a common data engine, Operations Management Suite is designed to address oil and gas company needs to capture and distribute operations data throughout the organization.

Operations Management Suite allows information to be entered once in the field or in the office and then made available

across the organization. Easy access to operational information across disciplines enables efficient and optimal decisions to be made throughout the organization from the field to the executive suite.

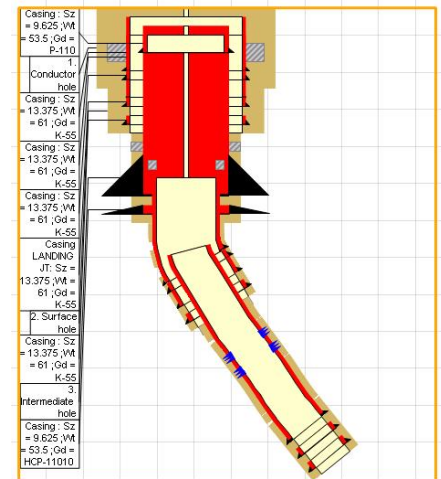
The key products within the suite include - Property Master, Well Lifecycle Manager, Production Manager, AFE Manager and Material Transfer Manager.

### The Challenge

The information demands placed on modern oil and gas industry production operations are immense and growing larger day by day. Accessing and understanding the volumes of information derived from drilling, completion, well servicing and production activities are critical aspects of today's business. As a result, how you manage the workflow process is increasingly important to overall productivity.

Challenges to this objective include:

- ▶ Data is gathered from widely dispersed and rapidly changing sources
- ▶ Management requires faster and more accurate reporting than ever before
- ▶ Strategies fluctuate dramatically with changing market conditions and business drivers



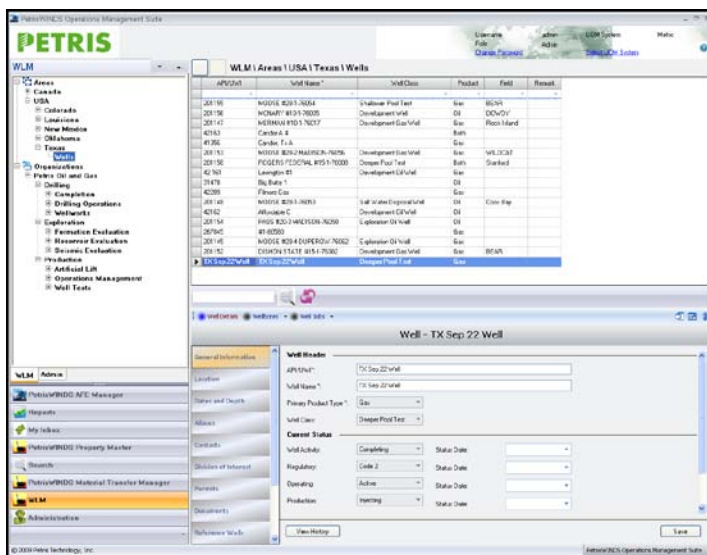
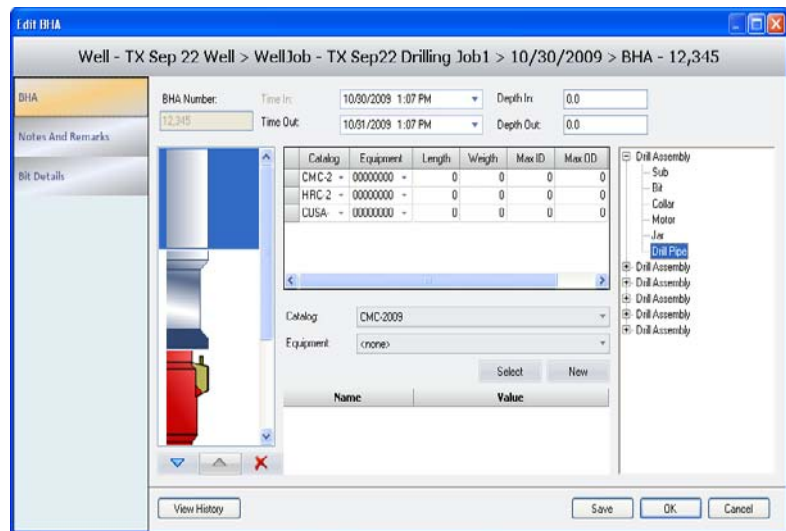
### Petris' Solution

Using Operations Management Suite, users will have better access to meaningful data.

- ▶ Increase collaboration through enterprise wide access to information
- ▶ Data preserved in operational database becomes an information asset enhancing value of the oil and gas asset
- ▶ Provide field and office teams simultaneous access to field data as it enters the database
- ▶ Data mining capability helps companies discover best practices and lessons learned for future use
- ▶ Increase visibility of opportunities within assets

## Highlights of the Solution

- ▶ Data is entered once and made available throughout the application
- ▶ Handles complex, multi-tiered allocations down to the well level
- ▶ Integrate with any commercial General Ledger system
- ▶ Data validation included as part of workflow process
- ▶ Extensive reporting including operational, analytical, ad-hoc, variance reports, email, regulatory and historical
- ▶ Fully integrated – Property Master, Well Lifecycle Manager, Production Manager, AFE Manager and Material Transfer Manager



## Additional Features

- ▶ Multi-language support
- ▶ Role-based security
- ▶ Standards compliance (PPDM, PRODML, SOA)
- ▶ Custom reporting capability
- ▶ Intuitive, easy to use user interface
- ▶ GIS visualization of producing assets
- ▶ Field data capture using handheld device or disconnected laptop

## About Petris

Founded in 1994, Petris has grown into a leading supplier of data management solutions and geosciences applications providing practical, real-world solutions for the Global Oil and Gas Industry. With over 500 customers around the world, Petris leverages its unique service-oriented Data Management solutions and applications to design and deploy innovative technology that integrates data from diverse data stores including seismic, borehole, production, drilling and pipeline to enable better decision making and application transparency. Petris is leading the way into a new era in integration, collaboration, data quality and geoscience. [www.petris.com](http://www.petris.com)

© 2010 Petris Technology, Inc. All rights reserved.

PetrisWINDS is a registered trademark of Petris Technology Inc. in the United States and other countries.

Other parties' trademark and service marks are the property of their respective owners, and should be treated as such. Information in this document is subject to change without notice, and does not represent a commitment on the part of Petris Technology Inc.

[www.petris.com](http://www.petris.com)