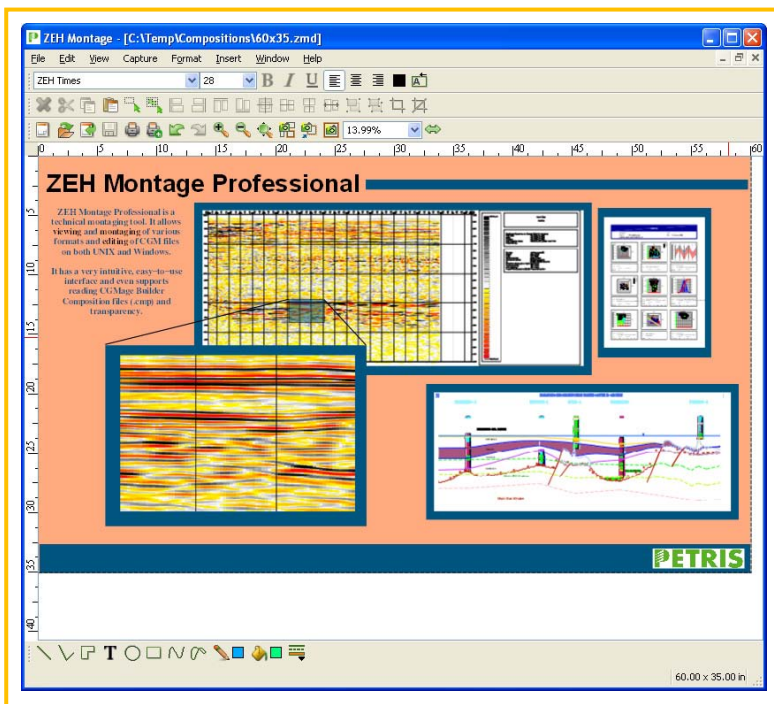


## What is ZEH Montage Professional?

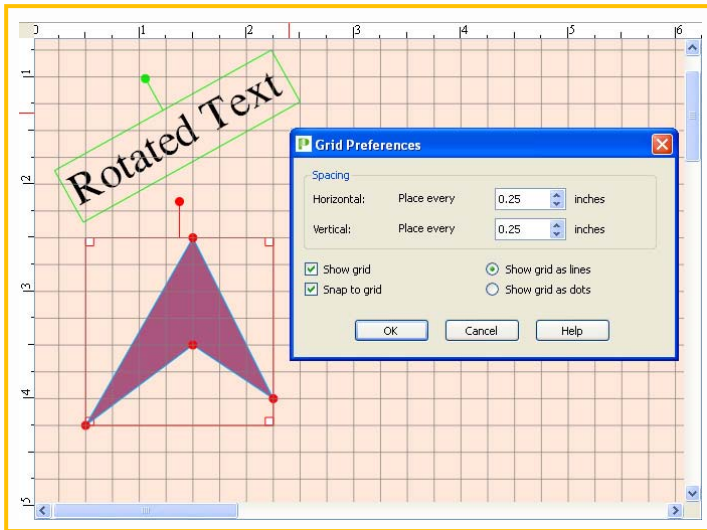
ZEH Montage Professional is a Windows and UNIX-based montaging tool enabling the creation of high-quality presentations of unlimited canvas size, using various file formats including CGM and all its extensions (including seismic data). With ZEH Montage Professional you can:

- ▶ Create montages of text, annotations, raster files and CGM files, and import CGM Mage builder composition files. All with a very intuitive, easy-to-use interface.
- ▶ Use advanced features, such as image cropping, transparency, and screen capture.
- ▶ Edit CGM files.
- ▶ Export your montage to various formats including PDF.
- ▶ Print using standard operating system printing or submit to a Plot Express plot server.
- ▶ Embed CGM and raster files into a PowerPoint® presentation and pan and zoom while in presentation mode.



## New Features and Functionality of Version 3.0

- ▶ Newer, cleaner icons have been updated. The text wrap icon is now included on the text toolbar.
- ▶ ZEH Montage Professional is now available on Solaris and Linux. This version will also read CGM Mage Builder composition files.
- ▶ Drastic speed improvements have been made when zooming in/out on CGM files. You may now zoom at much higher levels—no more maximum zoom limitations.
- ▶ Transparency can now be applied to raster files allowing items underneath to show through.



- ▶ Grids and the ability to snap to a grid are supported. Options include showing grids as lines or dots and setting the grid interval.
- ▶ Arbitrary rotation is available for annotations and raster formats. Select the item and rotate the handle around to the desired rotation.
- ▶ Elements may be locked to avoid accidentally moving or deleting. When selected, locked elements are denoted with red handles.

## System Requirements

Operating Systems/Software Requirements	Hardware Requirements
<ul style="list-style-type: none"> <li>▶ Windows 2000, XP, 2003, 2008, Vista, and 7</li> <li>▶ Solaris 8, 9, and 10</li> <li>▶ Red Hat Linux Versions 3, 4, and 5</li> <li>▶ Plot Express version 4.7 and above</li> </ul>	<ul style="list-style-type: none"> <li>▶ 60MB for installation; Additional as needed for file creation</li> <li>▶ 1GB RAM (2GB if using large data sets)</li> </ul>

## Technical Information

Input Formats	Output Formats
<ul style="list-style-type: none"> <li>▶ Raster (BMP, CALS, GIF, JPEG, PNG, TIFF, and XWD)</li> <li>▶ CGM, CGM+, CGM*PIP</li> <li>▶ ZMD (ZEH Montage composition format)</li> <li>▶ CMP (CGMage Builder composition format)</li> </ul>	<ul style="list-style-type: none"> <li>▶ PDF</li> <li>▶ Raster (JPEG, PNG, TIFF)</li> <li>▶ ZMD (ZEH Montage composition format)</li> </ul>

## About Petris

Founded in 1994, Petris has grown into a leading supplier of data management solutions and geosciences applications providing practical, real-world solutions for the Global Oil and Gas Industry. With over 500 customers around the world, Petris leverages its unique service-oriented Data Management solutions and applications to design and deploy innovative technology that integrates data from diverse data stores including seismic, borehole, production, drilling and pipeline to enable better decision making and application transparency. Petris is leading the way into a new era in integration, collaboration, data quality and geoscience. [www.petris.com](http://www.petris.com)