

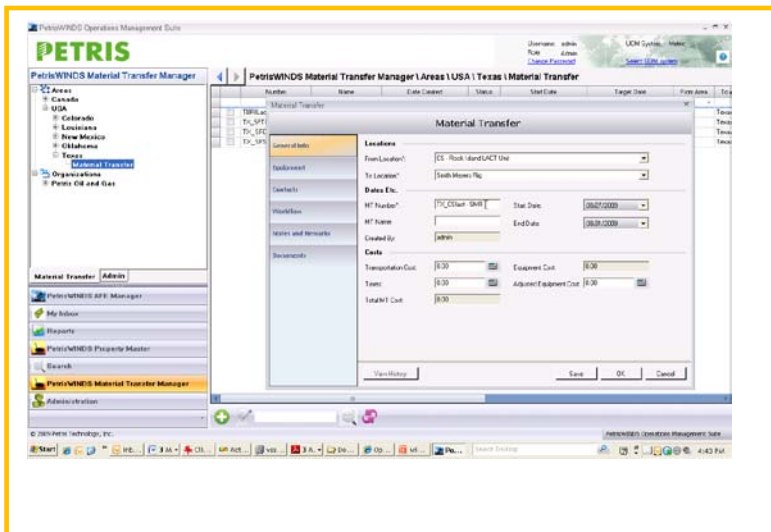
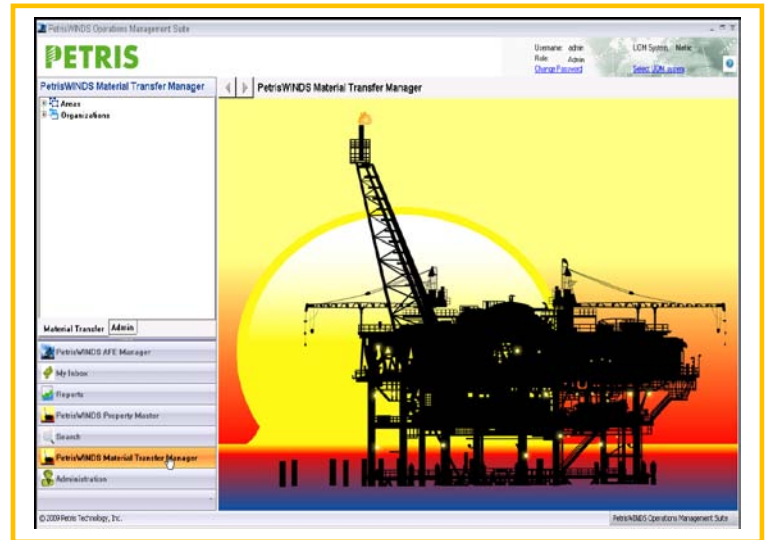
## Improving the Efficiency of Tracking and Transferring Equipment in the Field

PetrisWINDS Material Transfer is an additional module that can be added to PetrisWINDS Property Master for tracking and transferring equipment in the field. Material Transfer features an automated approval process aimed at improving the efficiency of tracking the equipment transfers and simplifying the complete process.

Material Transfer's electronic process allows for:

- ▶ The elimination of using paper to track transfers, while providing audit capability
- ▶ Ability to track equipment condition and allow for comments and photo images to be attached as part of the process

All of this provides the most comprehensive field equipment tracking and transfer management system designed by the industry for the industry.



## Near Real-Time Tracking and Monitoring

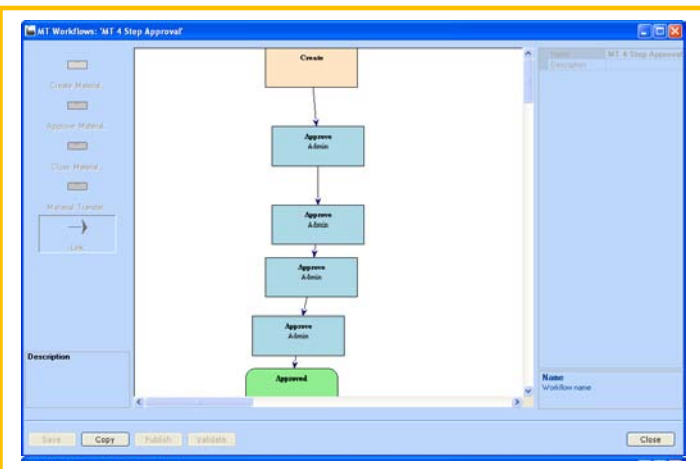
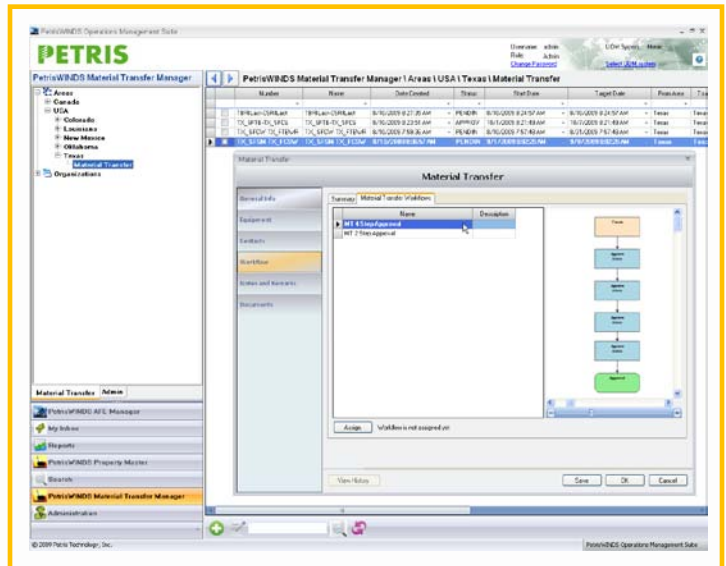
This module is available as a standalone application as well as being fully integrated with PetrisWINDS Operations Management Suite. Material Transfer has the ability to track and monitor equipment in near real-time to help reduce costs in three ways:

- ▶ Helps companies avoid unnecessary purchases of equipment by easily locating field and warehouse inventories
- ▶ Assists with reducing write-offs of equipment that cannot be located
- ▶ Assists in managing equipment transfers between various assets with separate ownership interests

Also, as an added long term benefit, a company can discover trends in how equipment is being utilized geographically and use this data to optimize their operations. By knowing exactly which location to find a desired piece of equipment, you can prevent down time on a high-volume producing well. For instance, in the event a compressor malfunctions, Material Transfer can help you look at all your compressors and their current location to find out where the closest available compressor is that could possibly be moved to this well whether it is sitting on a shut in or temporarily abandoned well, in a warehouse, or being used on a well that is not as high priority for production.

## Features

- ▶ Ability to track assets' condition, status and location
- ▶ Ability to track transportation costs, movement and location
- ▶ Automate the approval workflow with definable cost parameters
- ▶ Categorize equipment in company specific hierarchies
- ▶ Attach or link documents associated with material transfers.
- ▶ Track catalog data for equipment
- ▶ Fully integrates with PetrisWINDS Operations Management Suite



## Benefits

- ▶ Enforces and maintains a repeatable process
- ▶ Easily configure the application to conform to the corporate defined processes & workflows
- ▶ Maintain history for each item throughout its lifecycle
- ▶ Straightforward and intuitive UI
- ▶ Scalable solution
- ▶ Reduces equipment write-offs and unnecessary purchases of equipment

Hardware Requirements	Software Requirements
<b>Web/Application Server</b> – 2 X Intel Pentium (or compatible) 550 Mhz with 4GB of memory and 30GB SCSI drives 15k rpm	<b>Web/Application Server</b> – Windows 2003 Server, IIS 6.0 or higher with .NET Framework 3.5
<b>Database Server</b> - 2 X Intel Pentium (or compatible) 550 Mhz with 4GB of memory and 100GB SCSI drives 15k rpm	<b>DBMS</b> – SQL Server 2008
	<b>File Transfer</b> – ftp Server/MSMQ
	<b>Email Server</b> – SMTP Server/MS Exchange Server
	<b>Client</b> - Windows XP, Windows 7 or Windows 2000 server (or above) for desktop client application and Windows CE/Mobile for PDA client, MS Office 2003 or 2007, Adobe Reader 9.0 (or higher)