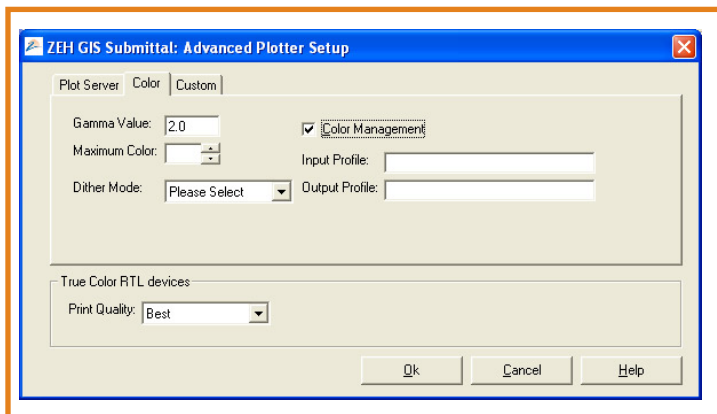
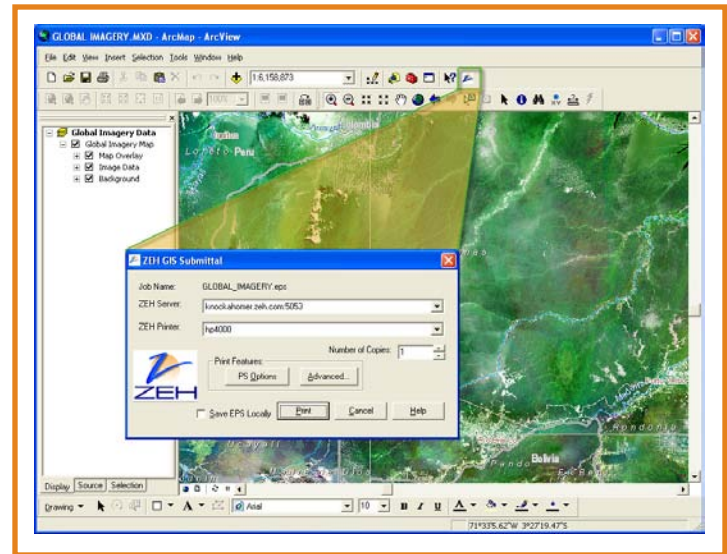


## What is GIS Submittal?

GIS Submittal (GSUB) is a plug-in for the ArcView desktop package from ESRI. This tool allows Plot Express users to submit images directly within ESRI applications to a Plot Express server solution, simplifying workflow and improving productivity. Users can do their real work and offload printing to the server.

## Benefits

- ▶ Simplifies the user workflow by enabling Plot Express printing directly from the application.
- ▶ Increases user productivity. GIS Submittal allows users to remain in the ArcGIS application and get back to the task at hand.
- ▶ Improves workstation and device performance by offloading processing to the Plot Express server.
- ▶ Takes advantage of Plot Express processing for consistency and superior quality output.
- ▶ Processes large complex files easily.

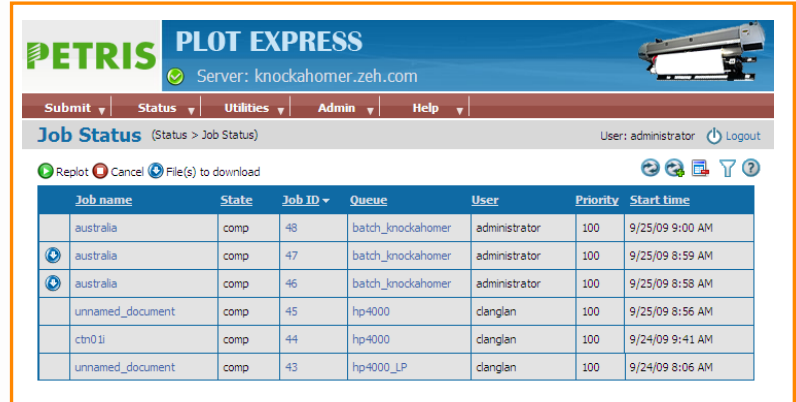


## Features for the User

- ▶ Submit easily from ArcView to Plot Express
- ▶ Set Advanced printer-specific options for the best output
- ▶ Along with the Plot Express Web Interface, easily track and manage your jobs

## What's New in Version 2.2

- ▶ Environment variables may now be used for defining directory locations. This is useful in a CITRIX environment to avoid collisions.
- ▶ Vista is now officially supported.
- ▶ The proper rotation is automatically set based on the map's page size.
- ▶ The *xml* file used for storing default keyword settings is now written to the user's application data directory thus allowing unique keywords for shared installations (Citrix).
- ▶ New printer-specific settings are now available.
- ▶ GSUB Version 2.2 is available on the latest Plot Express Version 5.0.



## System Requirements

Supported Operating Systems/Software	ESRI Requirements
<ul style="list-style-type: none"> <li>▶ All Windows operating systems supported by ArcView are supported</li> <li>▶ Plot Express 4.7 or higher is required</li> <li>▶ All printers supported by your version of Plot Express will work with GIS Submittal</li> </ul>	<ul style="list-style-type: none"> <li>▶ ArcView 9.x (ArcView 8.x is also supported but some of the newer enhancements don't apply)</li> <li>▶ No additional hardware requirements are needed other than those required by ESRI</li> </ul>

## About Petris

Founded in 1994, Petris has grown into a leading supplier of data management solutions and geosciences applications providing practical, real-world solutions for the Global Oil and Gas Industry. With over 500 customers around the world, Petris leverages its unique service-oriented Data Management solutions and applications to design and deploy innovative technology that integrates data from diverse data stores including seismic, borehole, production, drilling and pipeline to enable better decision making and application transparency. Petris is leading the way into a new era in integration, collaboration, data quality and geoscience. [www.petris.com](http://www.petris.com)