

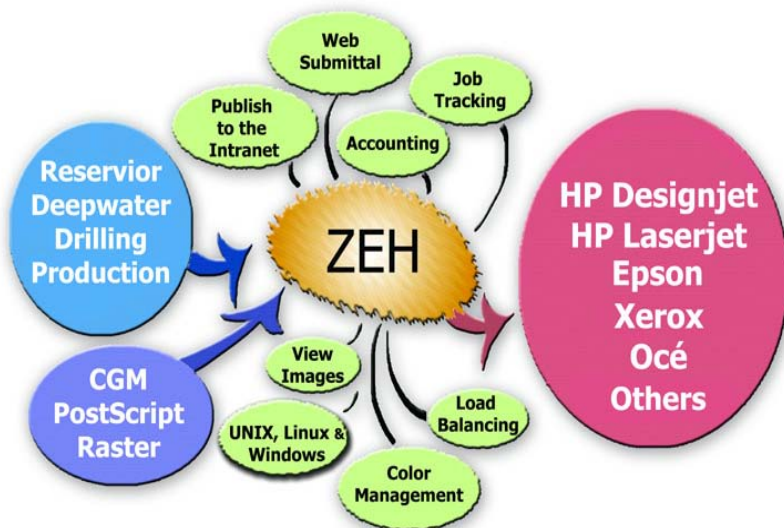
A Comprehensive Enterprise-Wide Technical Output Management Solution

PLOT EXPRESS is the main component of the PetrisWINDS Plotting Solutions. It is an enterprise-wide technical output management solution that handles the processing and printing of output from various industry-standard applications (e.g., Landmark, GeoQuest, ESRI). You simply submit files to the system and let PLOT EXPRESS handle the complex tasks of routing, processing, and printing the files.

PLOT EXPRESS is a flexible, scalable system that can grow with your site. It creates a powerful, networked printing system using your existing hardware regardless of whether you work with UNIX, Linux, or Windows, which applications you use, or how many different types of printers you have.

PLOT EXPRESS is designed for enterprise-wide deployment. It offers:

- ▶ A stable environment for mission-critical printing applications;
- ▶ Flexible deployment, because no two sites are alike;
- ▶ Web-based interfaces to monitor and use the system from any browser-enabled workstation;
- ▶ Sophisticated accounting features for tracking resource usage; and,
- ▶ Load balancing for both processing and printing, ensuring the highest possible throughput for your site.



Key Benefits

- ▶ Provides an infrastructure for printing
- ▶ Creates a common solution for all technical output
- ▶ Provides a stable foundation for a dynamic organization
- ▶ Creates a seamless environment across multiple locations
- ▶ Reduces administrative costs
- ▶ Provides accounting information
- ▶ Improves throughput
- ▶ Improves connectivity to printers
- ▶ Increases user productivity
- ▶ Decreases the help desk load
- ▶ Improves customer service levels

Features for the Administrator

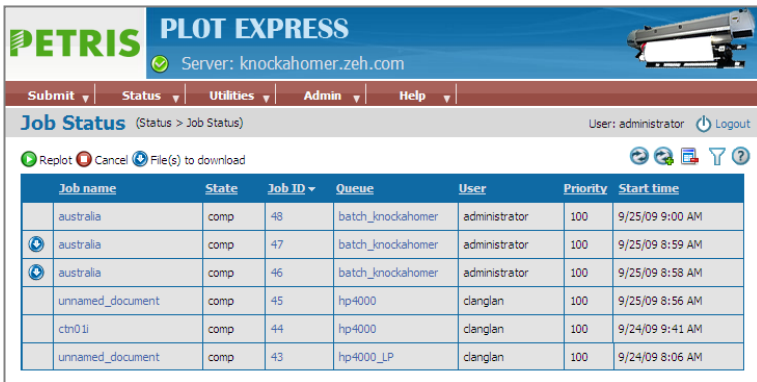
- ▶ **Single solution** – Eliminates incompatible printing solutions and reduces the time needed to support your users
- ▶ **Server-based processing** – Offloads processing from user workstations and from printers to a server
- ▶ **Web-based administration** – Allows the management of PLOT EXPRESS from any workstation with access to the site's intranet. Manages queues and printers, schedules jobs to run at specific times (e.g., at midnight), and monitors user activity
- ▶ **Accounting** – Tracks print sizes, the number of prints per printer, number of prints per user, as well as the colour and amount of ink used per printer and other data
- ▶ **Customizability** – Provides openness to create custom scripts and jobs that can be scheduled to run regularly
- ▶ **Monitoring** – Enables administrators and operators to monitor printers for amount of ink and media available

Add Printer Screen

Create Accounting Report

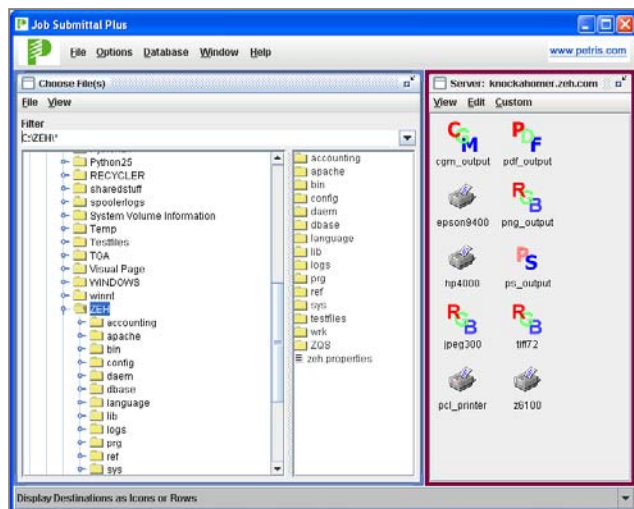
Features for the User

- ▶ **Job tracking** – Shows exactly where the job is in the system. No more wondering about the status of prints. Easily see where your job is in relation to other users.
- ▶ **Job management** – Allows users to move, cancel, prioritize jobs, and view job details
- ▶ **Submittal options** – Provides submittal within key applications or from ZEH's web-based and desktop submittal tools
- ▶ **File Conversion** – Supports translating from one file to another. For example, you may translate a seismic CGM file into a TIFF file for importing into other applications.
- ▶ **Web-based file preview** – Allows users to view CGM, CGM+, CGM*PIP, HP-GL/2, PostScript, and raster files before printing, without having to open the application that created them.
- ▶ **Reliability** – Simply submit the print and that's it. No need to tweak a submittal to get around resource or workflow barriers.



Job name	State	Job ID	Queue	User	Priority	Start time
australia	comp	48	batch_knockahomer	administrator	100	9/25/09 9:00 AM
australia	comp	47	batch_knockahomer	administrator	100	9/25/09 8:59 AM
australia	comp	46	batch_knockahomer	administrator	100	9/25/09 8:58 AM
unnamed_document	comp	45	hp4000	danglan	100	9/25/09 8:56 AM
ctn011	comp	44	hp4000	danglan	100	9/24/09 9:41 AM
unnamed_document	comp	43	hp4000_LP	danglan	100	9/24/09 8:06 AM

Job Status Page



Job Submittal Plus

Additional Products

EnterPrize

EnterPrize extends PLOT EXPRESS, creating a common solution for printing from any Windows application. This common printing infrastructure provides a global view of your technical printing, which leads to a productive workplace. EnterPrize helps your organization tackle issues like:

- ▶ User's not being able to print large files;
- ▶ User's not knowing if their print job has started, stopped, or finished;
- ▶ Inaccurate or incomplete printer utilization reports; and,
- ▶ The difficulties of managing multiple printing solutions: UNIX, Linux, and Windows.

Montaging

Petris also offers montaging tools on both Windows and UNIX. This enables the creation of high-quality presentations of unlimited canvas size. Features include:

- ▶ Montaging of CGM files including seismic data along with raster images;
- ▶ Bringing seismic CGM support to PowerPoint®;
- ▶ Editing of CGM files; and,
- ▶ Printing large presentation montages to PLOT EXPRESS.

GIS Submittal

Petris's GIS Submittal eliminates the complexity of printing large maps often found in the GIS environment. The software offloads the complex tasks of processing and printing large maps to a server, and it allows users to submit print jobs directly from inside ESRI applications – greatly simplifying the process. Benefits include:

- ▶ Simplifying the user's workflow;
- ▶ Increasing user productivity;
- ▶ Ability to manage your GIS printing from a web browser;
- ▶ Printing large complex maps easily; and,
- ▶ Eliminating incomplete or lost prints.

© 2010 Petris Technology, Inc. All rights reserved.

PetrisWINDS is a registered trademark of Petris Technology Inc. in the United States and other countries.

Other parties' trademark and service marks are the property of their respective owners, and should be treated as such. Information in this document is subject to change without notice, and does not represent a commitment on the part of Petris Technology Inc.

www.petris.com