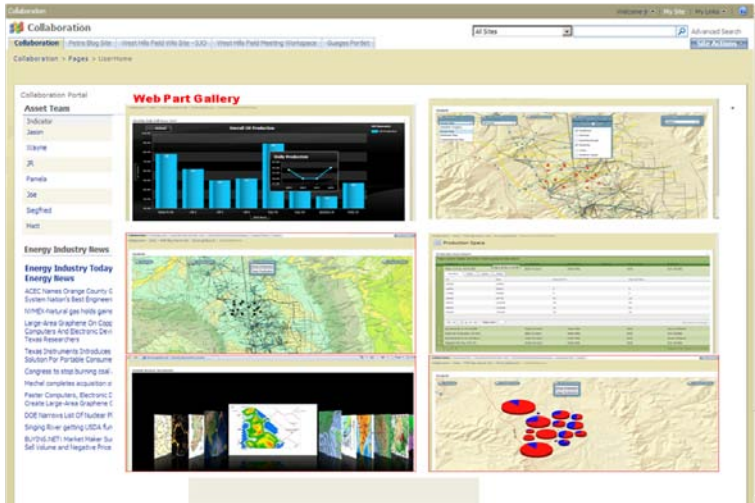


Providing Immediate Access and Use of All Your Information - Whether in Documents, Databases, or Maps



PetrisWINDS OneTouch™ brings all users, E&P application data and unstructured documents together through a web-based work space and data environment. It is the “one” place from where you can “touch” all your data in text format or GIS maps and collaborate with others on information and knowledge.

This E&P knowledge portal integrates the Microsoft Office SharePoint, Microsoft FAST, and ESRI geographic information system with the PetrisWINDS Enterprise framework, a Petris service-oriented architecture (SOA) solution which provides open, accessible, and reliable information from any data source.

The Challenge

E&P professionals agree that when solving a problem, you need fast and efficient access to the information. A considerable amount of technical and business information and knowledge resides in both the structured data bases and in unstructured repositories (e.g. documents, emails, etc). Simply enabling independent searches of these does not produce the most value. Common issues may include:

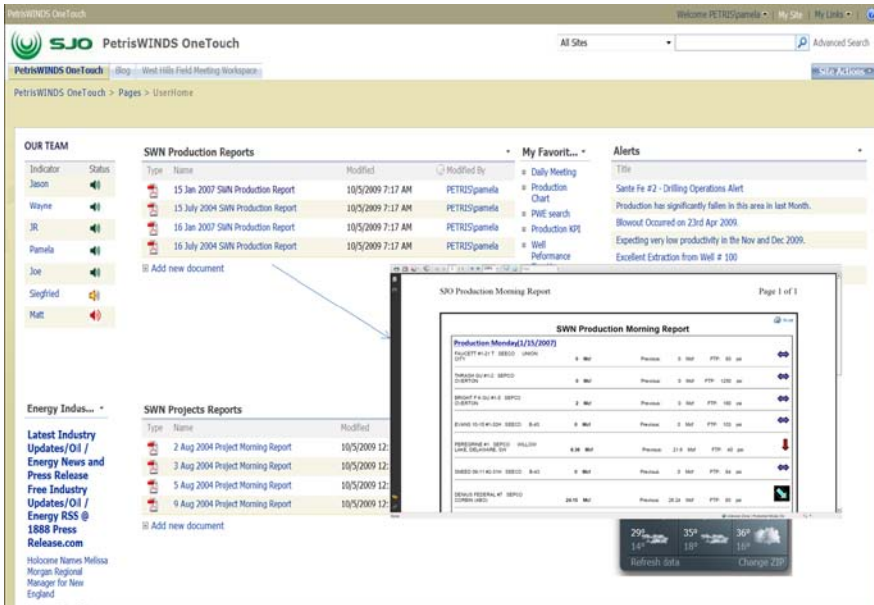
- ▶ Difficulty in finding the data and organizing it
- ▶ Inefficient utilization and analysis of data across different applications
- ▶ Challenges in collaborating with others and communicating results

Petris' Solution

Using PetrisWINDS OneTouch, users can now find information across all E&P applications and associated unstructured data:

- ▶ Utilize data with specialized viewers, business intelligence, reports and charts
- ▶ Transfer data from one application data store to another in your workflow
- ▶ Use data in the application of your choice
- ▶ Better collaboration and communication through Microsoft Office SharePoint
- ▶ Faster access to quality data
- ▶ Increased user productivity



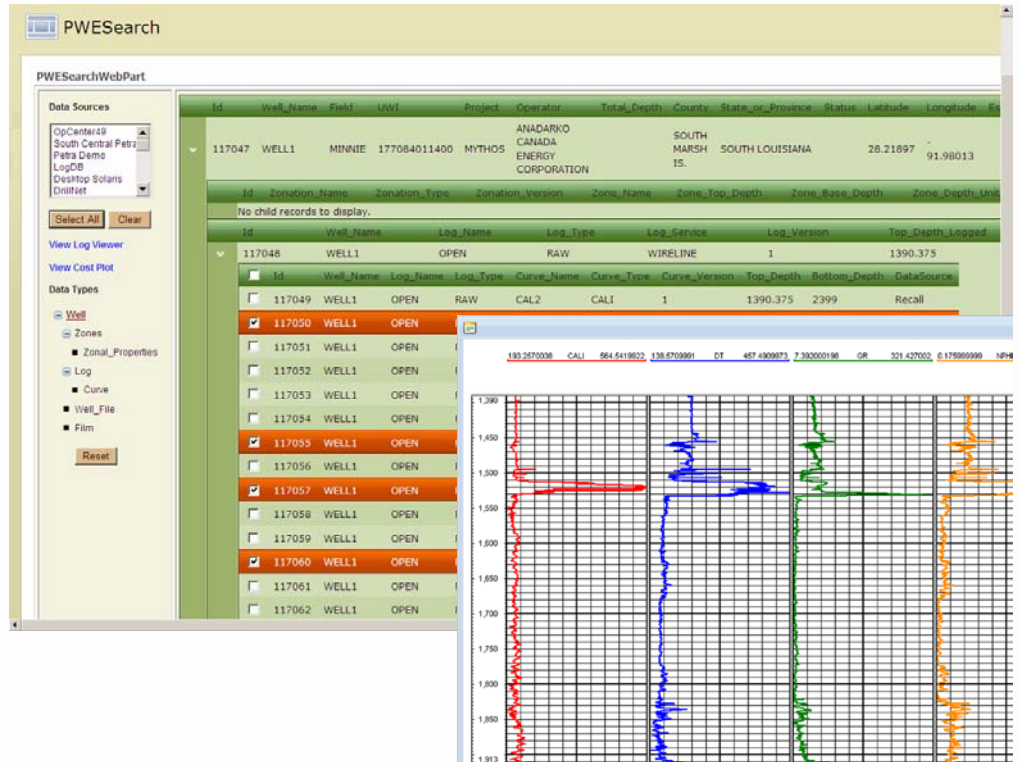


Highlights of the Solution

- ▶ Search from one place – all documents are associated with an asset
- ▶ Filter content using configurable taxonomy, free text search, map based search
- ▶ Search for content and drill down to your structured repositories
- ▶ Integrate with your existing technology; solutions are vendor neutral
- ▶ WebParts to solve business needs around Business Intelligence, Production reporting and Charting, Integrated specialized application viewers, etc.

Additional Features

- ▶ Visualize data from Project, Corporate, Master data sources in GIS map views
- ▶ Reports and charts for production data
- ▶ Data federation using PetrisWINDS™ Enterprise
- ▶ Drilling visualization
- ▶ Specialized viewers for PetrisWINDS Recall™ and other data sources
- ▶ Quality metrics on your data using DataVera HealthCheck™
- ▶ Visualize high quality data from your corporate data store and the correlated information across project or operational data store



About Petris

Founded in 1994, Petris has grown into a leading supplier of data management solutions and geosciences applications providing practical, real-world solutions for the Global Oil and Gas Industry. With over 500 customers around the world, Petris leverages its unique service-oriented Data Management solutions and applications to design and deploy innovative technology that integrates data from diverse data stores including seismic, borehole, production, drilling and pipeline to enable better decision making and application transparency. Petris is leading the way into a new era in integration, collaboration, data quality and geoscience. www.petris.com

© 2010 Petris Technology, Inc. All rights reserved.

PetrisWINDS is a registered trademark of Petris Technology Inc. in the United States and other countries.

Other parties' trademark and service marks are the property of their respective owners, and should be treated as such. Information in this document is subject to change without notice, and does not represent a commitment on the part of Petris Technology Inc.

www.petris.com