

The Data Management Challenge: How to Know What You Know

In an ideal world, your company's vital information would be available in one, easy-to-reach place, and you would know exactly how accurate it is. All your software could use all your data, and you would always see the big picture clearly. New applications and data sources would interface easily with existing ones, freeing your staff to spend their time on activities that help your business grow.



Unfortunately, today's reality is that managing data is time-consuming and expensive. Change is complicated and difficult - adding a new application or data source requires integration and frequently involves programming, which takes away from productivity and operational efficiency. Even the simple act of finding data is becoming more arduous as the number of data sources expand. Recent estimates indicate that professionals now spend more than 60% of their day looking for data. In addition, rising cycle times prevent the business from achieving its goals, and costs continue to increase as people have to re-purchase or recreate data that might already exist but cannot be found.

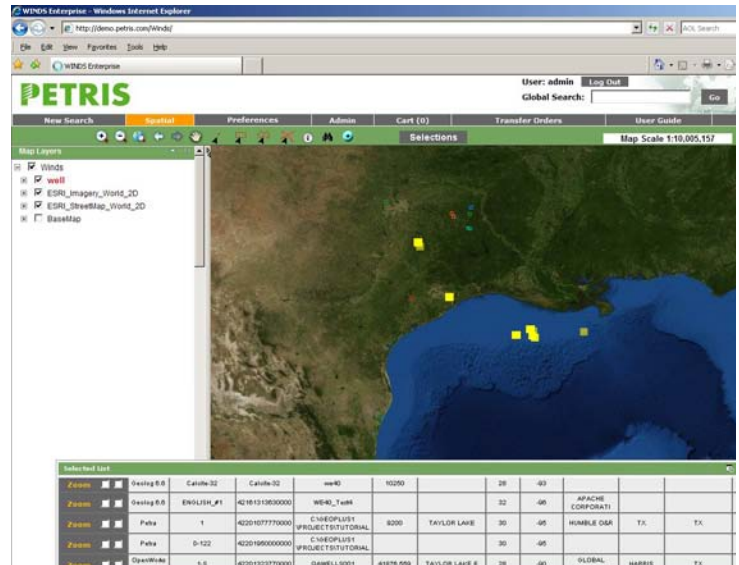
Add to this the question of risk. Increased regulation means stricter audit trails need to be in place to see how data was changed and how it was used to make decisions. This proves to be a difficult task under current data management methods. Moreover, unstructured data is increasing, which means that improved methods for managing this critical part of decision making need to be implemented. You could be making decisions on faulty or less-than-complete information. **Can your company accept these risks in today's business environment?**

The Solution: PetrisWINDS™ Enterprise

There is a simpler way. PetrisWINDS Enterprise lets you find and manage all your data, structured or unstructured, very quickly. Now you can move data from one application to another, with ease - without errors or loss of integrity. PetrisWINDS Enterprise provides both text- and GIS map-based search engines and data integration in one system. It consolidates your available data sources into a single web-based view. It is a seamless, easy-to-use interface enabling secure access to company data via a simple web browser — anytime and anywhere.

As your data requirements and systems evolve, PetrisWINDS Enterprise is designed to handle changes and grow with you. Our patented Dynamic Common Model™ - an extensible, flexible data model providing fast search capability - provides the broadest integration 'foot print' in the industry. The PetrisWINDS Enterprise architecture enables new data types to be added easily. Your data management system becomes a living system, able to adapt to your changing business requirements. **Find out how much your company really knows. Start taking advantage of it.**

PWE integrates with major E&P applications and Petris continues to work with our customers to develop other commercial or custom adapters based on specific needs



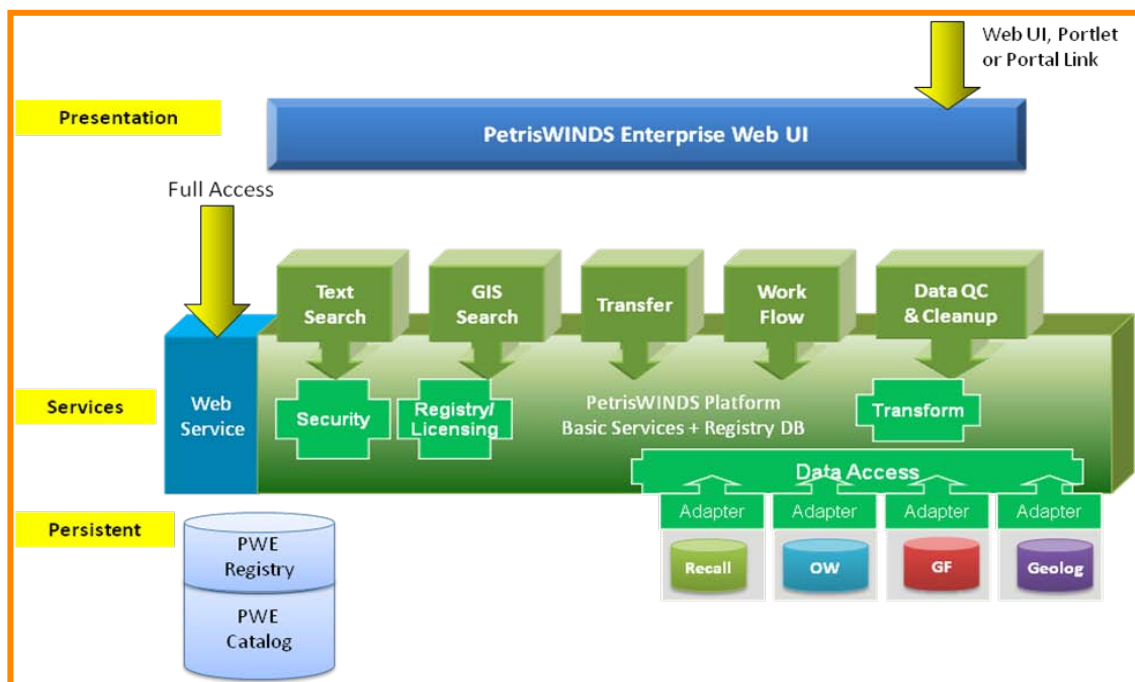
Features and Functionality

- ▶ **Web-based access to information** enables “anytime, anywhere” access to your data.
- ▶ **Extensible and flexible data model** grows dynamically to include all of your data, structured and unstructured, now and in the future.
- ▶ **Industry-standard Service-Oriented Architecture** allows rapid addition of new services and ensures future compatibility.
- ▶ **Consolidation of all data sources and assurance of access to all relevant data** improves data re-use, reduces re-purchase of data, and increases confidence in the results.
- ▶ **Transfer data** from one application to another without the loss of data integrity.
- ▶ **Map- and text-based searches** allow users to see all assets and data across the enterprise, including a map-based interface that ‘zooms in’ on an area of interest.
- ▶ **Web Services Access** for Data from any connected system is available to utilize PetrisWINDS Enterprise services with in-house or other commercial applications.
- ▶ **Petris’ patented Dynamic Common Model** transforms any data model to any other data model, ensuring that no data is lost during transformation while maintaining all existing mappings between data types when a new model is introduced.
- ▶ **Definition-based metadata catalog** provides enterprise-wide visibility of and rapid search throughout all data stored in applications, databases and data stores – the most fully-featured tool of its kind in use today. An optional Tightly Coupled Catalog can provide relational database access to any connected system.
- ▶ **Add-in viewers and services** provide visualization of many types of data, including seismic and well logs.
- ▶ Ability to combine searches for both **structured and unstructured data** in one place.
- ▶ **Available in Archive, Workgroup and Advanced versions to fit your needs** – the Archive Version supports a single data archive such as Recall; WorkGroup supports up to three additional data sources, and is an ideal configuration for smaller companies or tightly focused groups that do not require the massive flexibility of the Advanced version, which has no limit on connections.

Significant Market Facts (A Few Client Examples)

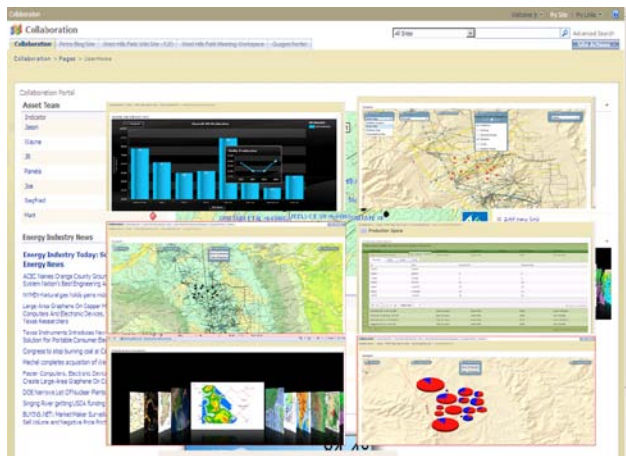
PWE has been successfully installed in global companies to address both their enterprise needs as well as specific solution requirements. This speaks to its scalability and affordability based on the specific client need. Some of the solutions PWE has provided include:

- ▶ A Global NOC is using PWE to
 - Find data from different applications/repositories
 - Find problem with the Data and QC the Data
 - Transfer data between applications connected using PWE
- ▶ A Global Service Provider is using PWE to connect several business units and provide data collaboration through their portal; with over 150 users accessing the system
 - PWE has helped tremendously by allowing all users to find and visualize information faster and easier using text and map based searches, combined with the flexible data model to accommodate the data sources each with its own master key.
 - Find quality issues with data
 - Save significant time due to the speed of search using the PWE catalog
- ▶ Global NOC uses PWE for their Seismic Volume Management Project
 - This uses the IESX and SeisWorks Adapters to gather seismic information in the PWE Catalog
 - Provide easy and sophisticated searching capabilities to find volume on GIS map or volumes within Area Of Interest (AOI)
 - Provide detailed information about each seismic volume collected from all applications
 - Preview and QC the volume before any action taken using the INT viewer
 - Correlate the seismic volumes between different applications/seismic projects
 - Accumulate historical information of the volumes
- ▶ A Regional client uses PWE with DataVera for Data Access and cleansing
- ▶ Another Global NOC is using PWE to manage their Well Bore and Seismic data. As one of the examples – PWE provides access to Charisma and SeisWorks through their Adapters and Catalog, helping users to find and transfer data.



PetrisWINDS Enterprise - Architecture

PetrisWINDS Enterprise will support The new E&P portal solution, PetrisWINDS OneTouch



PWE continues to evolve based on the changing demands of the industry. In continuing with Petris' commitment to data management, PWE will support the new E&P portal solution, PetrisWINDS OneTouch™. The enhanced capabilities and integration of these two solutions will provide even more visibility into a company's enterprise-wide data than ever before.

Overcoming the integration barriers caused by lack of data standards between software systems, PetrisWINDS Enterprise makes all your data accessible to any adapter-supported application. This accessibility

speeds data access, improves data quality, and protects the intellectual capital of your organization. PetrisWINDS Enterprise can shorten your project cycle times. It can allow you to spend more time analyzing your data rather than finding it. Most of all, it can save you money.

Only Petris' applications can meet the "round-trip data challenge": to move data from one data source to another – and back again – with zero data loss. Since the model is dynamic and based on the data definitions provided at a given moment, it avoids the problem faced by static models of data mapping: the inevitability of being left behind by changing data standards.

Key Business Benefits

- ▶ **Reduced Cycle Time** through efficient data search and transfer
- ▶ **Increased Confidence** in data quality and availability
- ▶ **Reduced Risk** since the best available information is applied to decision making
- ▶ **Lowered Costs** for application / data source integration and data management

Petris' Flexibility Brings You Deeper Knowledge and Higher Efficiency

Petris has become one of the leaders in the implementation of Service-Oriented Architecture for software used by the Oil & Gas industry. At Petris, we feel that our focus on distributed-component architecture and our support of open standards help ensure that our software will not be mired in stagnant business processes or archaic data standards. As the business world changes, Petris' service-oriented applications will adapt to it. In the end, our unmatched flexibility translates to better data management and better time value for our customers.

Imagine being able to access all the data you need.

Whenever you need it, wherever you are. In the format you need. And having the confidence to use it....

...without replacing any of your existing systems.

Let PetrisWINDS Enterprise make this a reality for your business.

© 2010 Petris Technology, Inc. All rights reserved.

PetrisWINDS is a registered trademark of Petris Technology Inc. in the United States and other countries.

Other parties' trademark and service marks are the property of their respective owners, and should be treated as such. Information in this document is subject to change without notice, and does not represent a commitment on the part of Petris Technology Inc.

www.petris.com