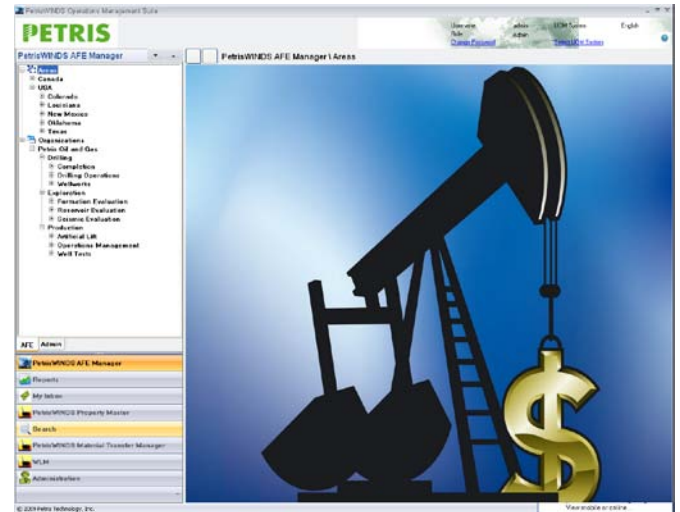


A Complete Management Solution for the AFE Workflow Process

Petris has released its latest AFE (Authorization for Expenditure) Manager and has set a new standard for managing AFE's for the global oil and gas industry. Today's E&P companies require the use of practical and efficient systems to handle their individual work processes. AFE's are critical for cost control, project management, achieving planned ROI, and key internal and partner communications. Using spreadsheets can be time consuming, labor intensive, and lack proper audit controls.



AFE 1407D

General Info

Opening Below Casing After Casing

Budget Cost*

Justification

Procedure

Notes

AFE Docs

Workflow

Disclaimer

Cost Summary

CODE	COST TYPE	AMOUNT	NET	DESCRIPTION
885	Rentals - Surface	0.00	0.00	
825	Rig - Daywork	0.00	0.00	
SUB COST TYPE AMOUNT NET DESCRIPTION				
	Rig - Daywork	100,000	100,000	
	Other	10,000	10,000	
Total:		115,000.00	115,000.00	
910	Communications	0.00	0.00	
525	Contract Labor	0.00	0.00	
SUB COST TYPE AMOUNT NET DESCRIPTION				
	Other	15,000	15,000	
	Contract Labor	0	0	
Total:		15,000.00	15,000.00	
850	Rentals - Downhole	0.00	0.00	
SUB COST TYPE AMOUNT NET DESCRIPTION				
	Work String	5,000	5,000	
	Packers/Plugs	1,000	1,000	
	Choke Manifold	1,200	1,200	
	Bits	15,000	15,000	
	Pumps	5,000	5,000	
Total Budget Cost:		0.00	0.00	
Total Net Budget:		0.00	0.00	

Workflow action: Save AFE, Delete AFE, Copy AFE, Import, View History, Close

Product of Choice

PetrisWINDS AFE Manager™ is feature rich and can be easily learned in a few hours. Users can create an AFE in minutes and electronically route it to each team member based on the company's approval process. In addition, reports on capital expenditures by working interests can be easily created and supporting documents can be attached to the AFE for review. AFE Manager fully reconciles with automated transfers in the enterprise general ledger system and other systems that contribute to and require its information and reports.

Benefits

- ▶ Configurable to your workflows, your cost codes, your ownership rules
- ▶ Transparent daily tracking of costs and variables
- ▶ Consistent practice between projects, divisions, and entities
- ▶ Timely approval using your email and communication systems

AFE 1407D

General Info

Phase	Budget Amount	Budget Amount Net	Estimated Cost	Estimated Cost Net	Actual Cost	Actual Cost Net	Working Interest
After Casing	0.00	0.00	0.00	0.00	0.00	0.00	100.00
Before Casing	45932.00	45932.00	0.00	0.00	0.00	0.00	100.00
Operating	163200.00	136268.00	0.00	0.00	0.00	0.00	80.00
Total:	215,132.00	181,292.00	0.00	0.00	0.00	0.00	

Justification

Procedure

Notes

AFE Docs

Workflow

Disclaimer

Cost Summary

Cost Summary

Budget Cost

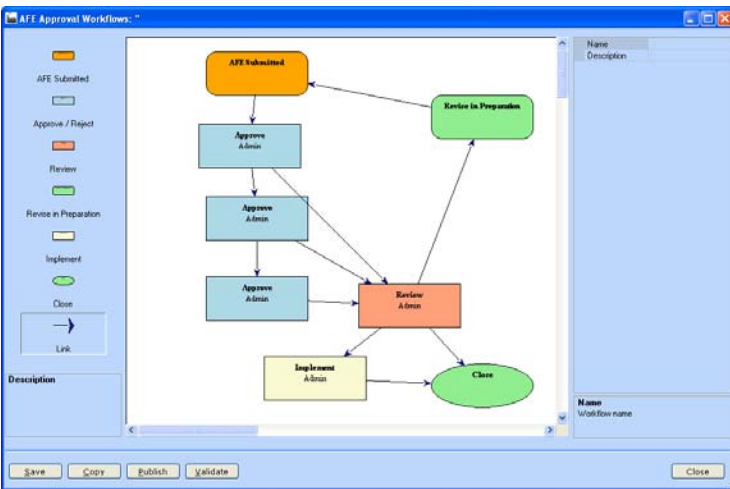
Cost Summary

Operating

After Casing

Before Casing

Workflow action: Save AFE, Delete AFE, Copy AFE, Import, View History, Close



Features

Complete management of the AFE workflow process including:

- ▶ Creating, routing, updating, controlling and reporting
- ▶ Incorporates official approval process policies
- ▶ AFE revisions and supplements, as well as a complete audit trail of the AFE Accounting
- ▶ SOX level controls for auditing the AFE
- ▶ Ability to capture AFE field estimates and actual cost data
- ▶ Integration with any commercial General Ledger (GL) system

And More

- ▶ Manage AFE's for all types of assets
- ▶ Ability to create template AFE's
- ▶ Ability to copy AFE's
- ▶ Multi-language support
- ▶ Integration with existing DWW module
- ▶ "Outlook like" look and feel
- ▶ Easy to configure options
- ▶ Role based security with tight hole capabilities

Hardware Requirements	Software Requirements
Web/Application Server – 2 X Intel Pentium (or compatible) 550 Mhz with 4GB of memory and 30GB SCSI drives 15k rpm	Web/Application Server – Windows 2003 Server, IIS 6.0 or higher with .NET Framework 3.5
Database Server - 2 X Intel Pentium (or compatible) 550 Mhz with 4GB of memory and 100GB SCSI drives 15k rpm	DBMS – SQL Server 2008
	File Transfer – ftp Server/MSMQ
	Email Server – SMTP Server/MS Exchange Server
	Client - Windows XP, Windows 7 or Windows 2000 server (or above) for desktop client application and Windows CE/Mobile for PDA client, MS Office 2003 or 2007, Adobe Reader 9.0 (or higher)