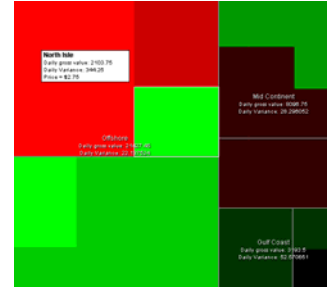


Dashboard at a Glance

The **PetrisWINDS Dashboard™** is an easy-to-use tool that provides an immediate graphical representation of numerical data, whether the performance of a company's assets, its projects, or its strategic initiatives.

The Dashboard provides management with a desktop- or Web-based tool. It allows anyone, from the project manager to the CEO, COO, or CFO, to focus on resources and identify problems quickly and efficiently.



Dashboard Features

Dashboard is a web-based application that can populate a Dashboard Map using MS Excel as an input template, or integrating with any web-enabled application by accepting input data in XML.

Dashboard helps *visualize* project information. It associates numerical values with colors and sizes. Each individual activity or asset appears on the dashboard as a rectangle: the rectangle's color and size provide visual data about the value.

The size of each rectangle in the Dashboard demonstrates a variable (*e.g.* cost, revenue, etc.) pertaining to the associated activity or asset.

The color of each rectangle on the map can be associated with a numerical indicator such as performance. For example, green can indicate superior performance, red can represent inferior performance, and dark colors can indicate neutral performance.

All Dashboard attributes, including rectangle color and size combinations, are assigned by you, the user, to whatever performance indicators you desire.

Dashboard allows you to perform detailed data analysis by right-clicking the mouse anywhere on the map to zoom to a particular "node" or rectangle. You can retrieve additional data on individual "nodes" from the map simply by moving the mouse over the node.

Key Benefits

- ▶ Easy to use: map reading can be taught, learned, and used in 15 minutes or less.
- ▶ Reduces the time required to analyze large volumes of data.
- ▶ Helps identify the "critical few" among the "trivial many" at a glance.
- ▶ Helps monitor data from multiple areas at once with data updates as often as needed.
- ▶ Helps analyze performance and/or risk in various scenarios.
- ▶ Allows you to spotlight a particular data field by simply typing its name.
- ▶ Aggregates data from heterogeneous fields for a single visual Dashboard representation, with cascading capabilities for details.
- ▶ Allows the color scheme to be altered as required – very helpful for colorblind employees.
- ▶ Connects to a URL or database for dynamic analysis.

Houston, TX
+1 713-956-2165
+1 877-9PETRIS

Toulouse, France
+33 581 330 020

London, UK
+44 20 8202 2433

www.petris.com

Dashboard User Interface

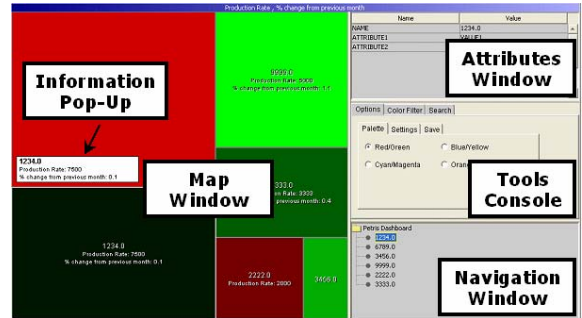
The **PetrisWINDS Dashboard** user interface consists of four main components:

Map window or Dashboard Map: consists of tiles or “nodes” of varying sizes and colors. When you move the mouse over a node, Dashboard will display an **Information Pop-Up** window. This window contains information pertinent to that node.

Attributes Window: used to designate unmapped data attributes for nodes on the Dashboard map.

Tools Console: allows you to perform various operations on the Dashboard map. The tools console is divided into three tabs: Options, Color Filter, and Search.

Navigation Window: contains a “folder/ directory tree” structure that will be familiar to anyone who has used Microsoft Explorer or a similar interface. This window displays the data hierarchy in terms of folders and sub-folders.



How is Dashboard set up?

You need ...

- Identification for each ‘box’
- A value to define the ‘size’ of the box
- A value to define the ‘color’ of the box

And also (optional)...

- Add links to act on the information found
- Add comments to help with analysis of the information found

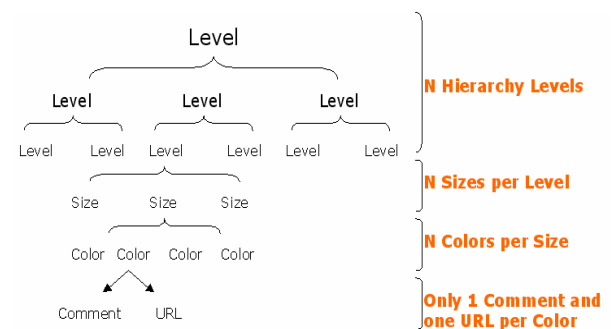
Dashboard Components

- IBM ExcelAccessor Bean Suite 2.0 or higher
- Apache Xerces2 XML jar
- SmartMoney Webmap jar–COS jar (for Excel Parser)
- O'Reilly file Upload jar
- Tomcat 3.2.3 or higher servlet engine
- Excel 5.0c or higher installed locally on machine
- Microsoft IIS Web server
- Sun Java JDK

Dashboard Map

The **PetrisWINDS Dashboard Map** is organized by Levels:

- Each individual node represents a row of data on the lowest level of the data hierarchy.
- Groups of nodes may represent higher levels of the data hierarchy.
- For example, in a Dashboard map depicting the National Football League, groups of nodes may represent divisions or conferences of the League, and each individual node will represent a specific team within that division or conference.



The diagram above illustrates Dashboard’s ability to accommodate multiple entries for LEVEL, SIZE, and COLOR in the Excel spreadsheet. Note that SIZE entries are associated with the lowest level of the hierarchy.